



6/9 Nurmi Avenue Newington, NSW



2



2



1

Spacious Apartment with Pristine Outlook Inspect Midweek By Appt

Step through the door of this oversized executive apartment and you will be impressed by the privacy and presentation of this top floor allotment. Natural sunlight cascades through the treetops providing an abundance of natural light and ventilation. The generous living and formal dining flow seamlessly from the well-appointed modern kitchen and meals area and out to the wide and BBQ entertaining area.

Council Rates: \$385.00 p/q
Water Rates: \$170.00 p/q
Strata Rates: \$1,949.60 p/q

FEATURES:

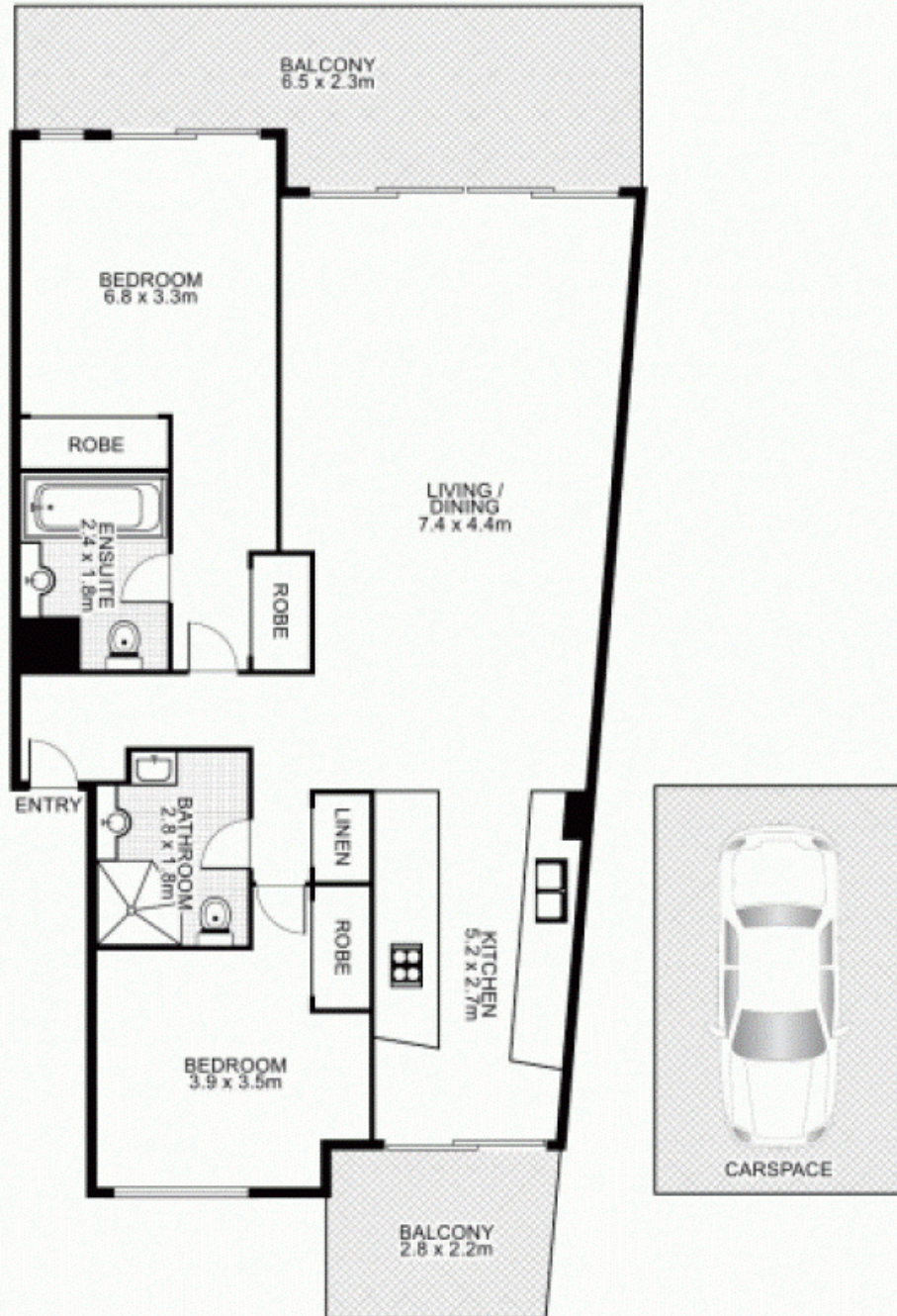
- Oversized rooms and high ceilings
- Updated internal furnishings + A/C
- Open plan living area with two terraces

Stevan Vuk-Luboya Nathan McVeigh

0402 003 003

0481741885

6/9 Nurmi Avenue, NEWINGTON



This floor plan is intended as a guide only. Layout dimensions are approximate only. No representation or warranties of any nature whatsoever are given or intended. Any person using this information should rely on their own enquiries.