



A105/36 Oxford Street Epping, NSW



2



2



1

## LEASED! By Rebecca Attard | Near New Apartment with Inner Courtyard!

### The Details:

Oxford Central offers modern and convenient living in a heart of Epping. This stunning two-bedroom apartment has been designed to capture abundance of natural light through ceiling to floor windows and has a unique inner courtyard flowing onto the living room. Located just 150m from Epping Station, Epping Club, village shops, dining and just seven minutes to Macquarie University, this apartment provides quiet and convenient living.

### The Features:

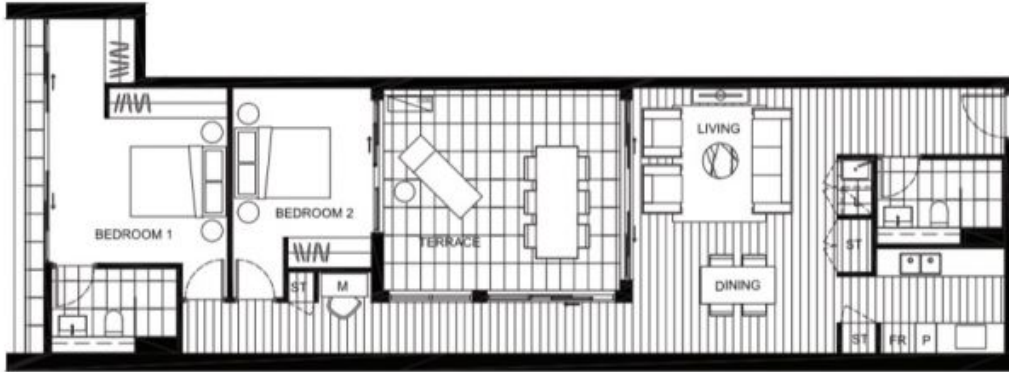
- Two well sized bedrooms with spacious built-in wardrobes
- Oversized internal area totaling 93sqm
- Gas cooking and integrated dishwasher


**Rebecca Attard**

0429 016 817

**Stevan Vuk-Luboya**

0402 003 003



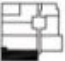

  
**OXFORD CENTRAL**  
 — EPPING —

**CENTRALE APARTMENTS**

1.06

**2 BEDROOM PLUS MEDIA**

Internal Area	93 sqm
External Area	24 sqm
<b>Total Area</b>	<b>117 sqm</b>

LEVEL 1

[OxfordCentral.com.au](http://OxfordCentral.com.au)  
 1800 917 997

marchese partners

CBRE

This floor plan is a guide only and does not constitute an offer. It is not intended to represent the actual layout of the property. The actual layout may vary from the floor plan shown. The floor plan is provided for information only and should not be relied upon for any purpose. The floor plan is not a contract and does not constitute an offer. The floor plan is provided for information only and should not be relied upon for any purpose. The floor plan is not a contract and does not constitute an offer.