



NSW 1 Australia Avenue Sydney Olympic Park,

2 2 1

Panoramic Tree tops & Sydney Skyline - 154m2

Built by prestige builder Bill Bergia, this Building set the benchmark for luxury finishes in Sydney Olympic Park. Situated on the 4th floor and on the north east corner, this unit offers stunning panoramic district & the Sydney CBD views.

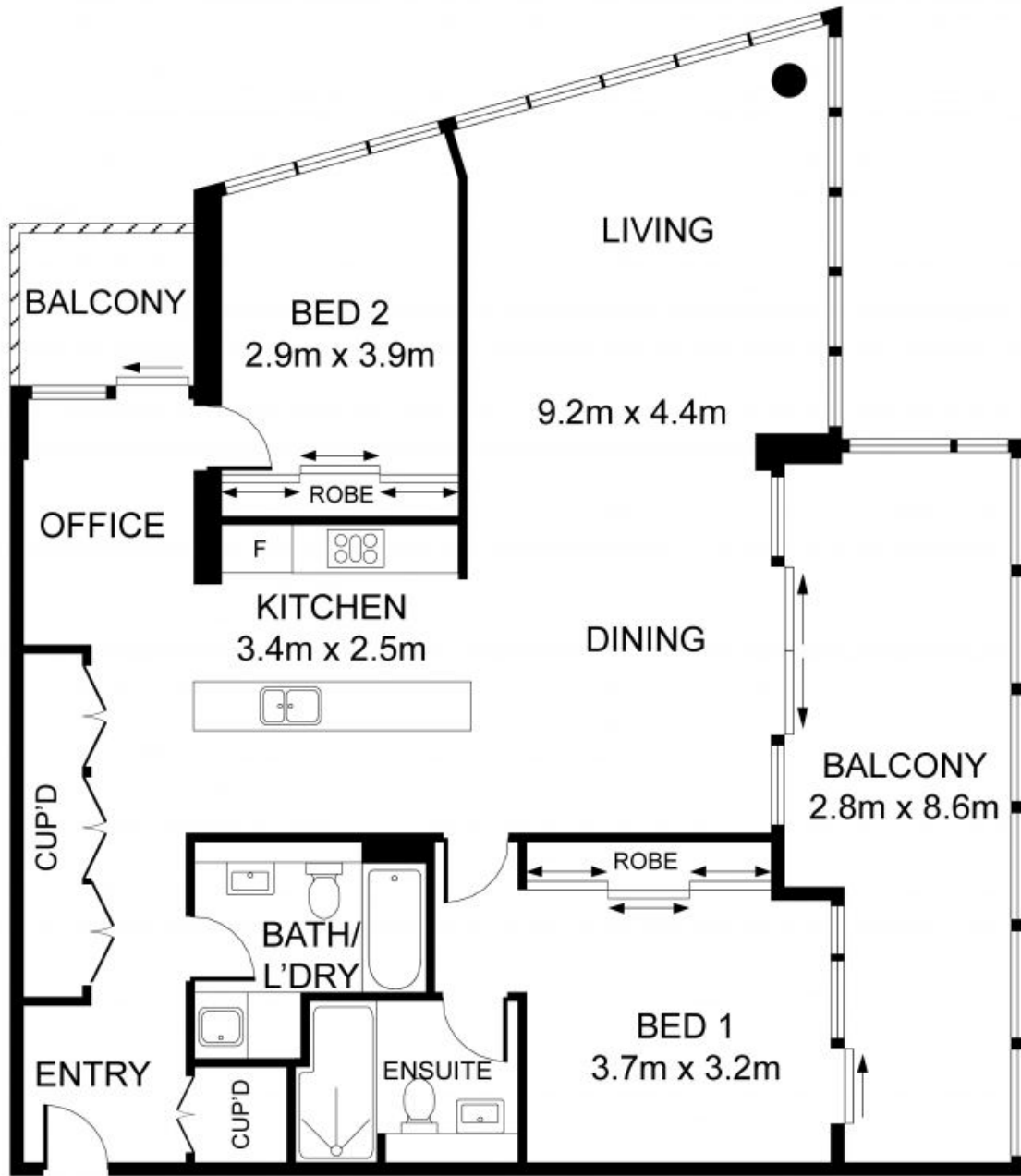
The security building offers a luxury lifestyle in the heart of the Sydney basin, with acres of park-land, kilometres of walking/cycling and running tracks, a plethora of transport and world-class sporting facilities plus weekend entertainment and activities that are diverse as they are amazing.

Outgoings: PQ
Strata: \$1,500.55

Council Rates: \$258.00 p/q
Water Rates: \$177.00 p/q
Strata Rates: \$1,500.00 p/q

Stevan Vuk-Luboya

0402 003 003



401/11 Australia Avenue, Sydney Olympic Park

INTERNAL AREA: 106 SQM APPROX.



DISCLAIMER: 3D Property View accepts no liability for the accuracy of details contained within our floor plans. All plans are drawn and also checked to the best of our ability, however information contained herein is approximate and has not been surveyed or drawn to scale. Our floor plans should be used as a guide only. Do not attempt to refer to our floor plans for structural or detailed information.



401/11 Australia Avenue

Sydney Olympic Park, NSW