

8/19 Blaxland Avenue Newington, NSW



3



2



2

## Penthouse with 360 Degree Views, One of a kind

### The Facts:

This penthouse features 3 generous bedrooms, 2 bathrooms and 2 secure car spaces with storage. Beautiful wrap around terraces and tastefully renovated interiors are a joy to be in. Situated in an award winning complex developed by Mirvac including resort style pool and gardens to enjoy.

### The Details:

### The Unique:

Outgoings: all are approximate

Strata \$2705.05 PQ

Water \$172.78 PQ

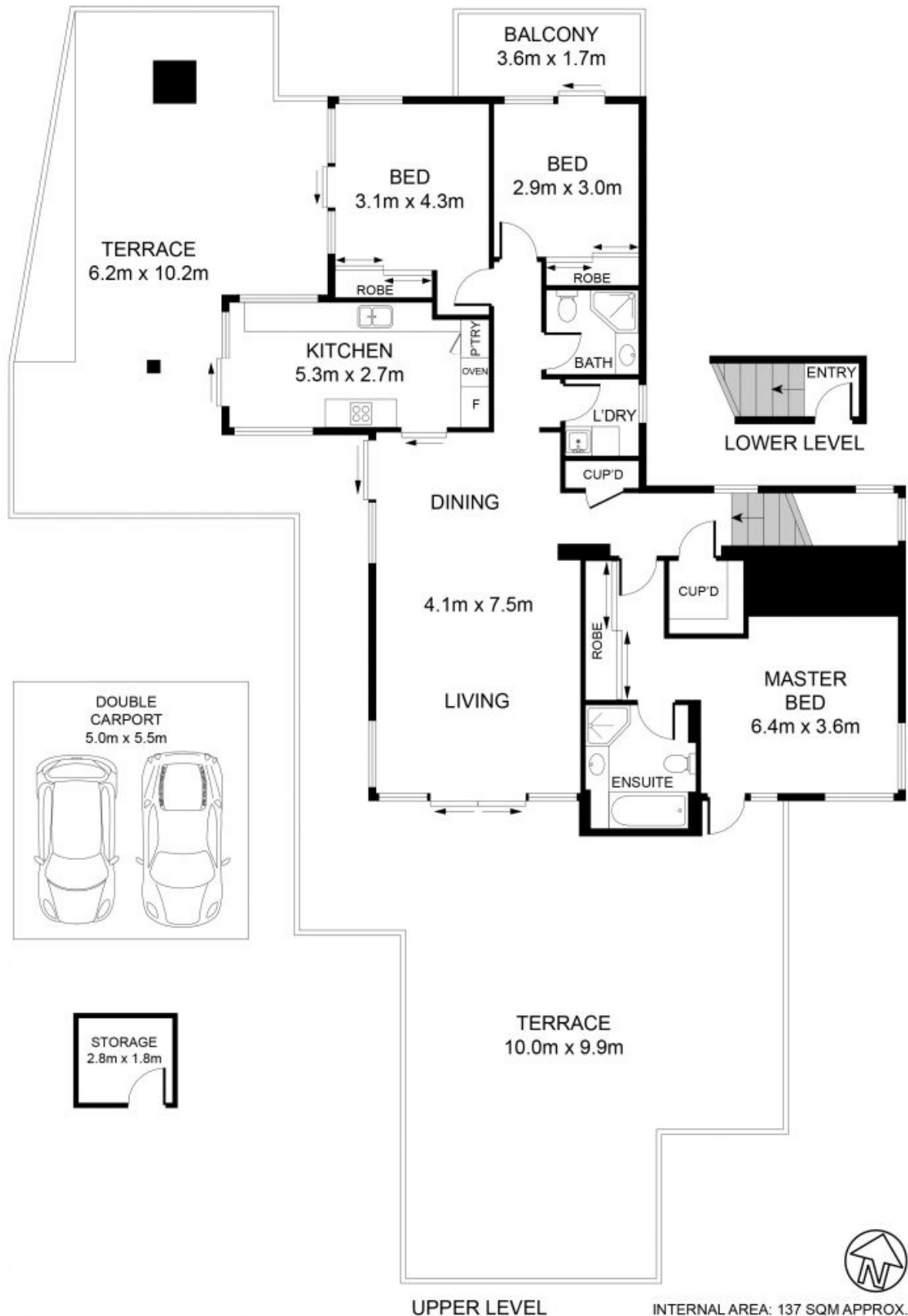
**Council Rates:** \$259.00 p/q

**Water Rates:** \$170.00 p/q

**Strata Rates:** \$2,789.00 p/q

**Stevan Vuk-Luboya**

0402 003 003



UPPER LEVEL

INTERNAL AREA: 137 SQM APPROX.  
TOTAL AREA: 192 SQM APPROX.

8/19 Blaxland Avenue, Newington



8/19 Blaxland Avenue

DISCLAIMER: 3D Property View accepts no liability for the accuracy of details contained within our floor plans. All plans are drawn and also checked to the best of our ability, however information is approximate, and have not been surveyed or drawn to scale. Our floor plans are for information only and should not be used as such. Do not attempt to refer to our floor plans for structural or technical information.



Newington, NSW