



A105/36 Oxford Street Epping, NSW



2



2



1

## Near New Apartment with Inner Courtyard!

### The Details:

Oxford Central offers modern and convenient living in a heart of Epping. This stunning two-bedroom apartment has been designed to capture abundance of natural light through ceiling to floor windows and has a unique inner courtyard flowing onto the living room. Located just 150m from Epping Station, Epping Club, village shops, dining and just seven minutes to Macquarie University, this apartment provides quiet and convenient living.

### The Features:

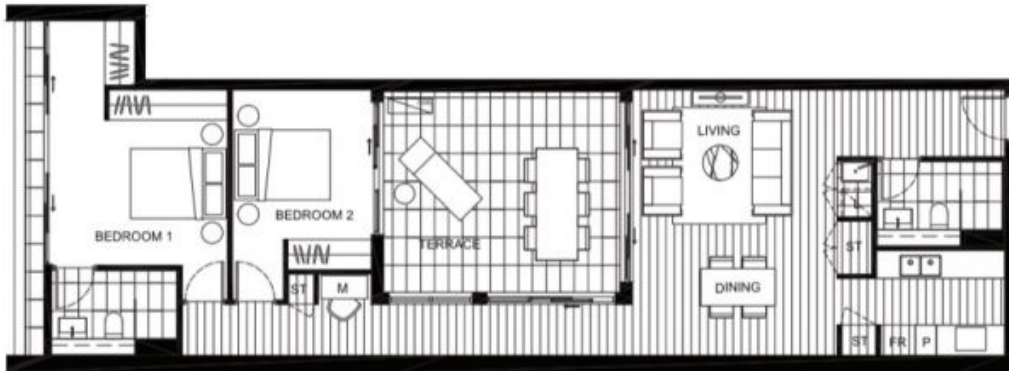
- Two well sized bedrooms with spacious built-in wardrobes
- Oversized internal area totaling 93sqm
- Walk in kitchen with premium Miele appliances and Parisi tapware
- Gas cooking and integrated dishwasher

**Rebecca Attard**

0429 016 817

**Stevan Vuk-Luboya**

0402 003 003



**CENTRALE APARTMENTS**

1.06

**2 BEDROOM PLUS MEDIA**

|                   |                |
|-------------------|----------------|
| Internal Area     | 93 sqm         |
| External Area     | 24 sqm         |
| <b>Total Area</b> | <b>117 sqm</b> |



LEVEL 1

OxfordCentral.com.au  
1800 917 997

marchese  
partners

**CBRE**

Disclaimer: This floor plan and area measurements are for illustrative purposes only. They are not intended to constitute an offer of real estate. All dimensions and measurements are approximate and should not be relied upon for legal purposes. For more information, please contact your real estate agent or the relevant authority.